

Vall de Boí
Where the Pyrenees touch the sky

www.vallboi.cat

Vall de Boí
Where the Pyrenees touch the sky

A breathtaking scenery and a hard to beat natural and cultural heritage define Vall de Boí, a hideout in the Pyrenees of Lleida nestled by mountains of overflowing beauty.

Gateway to Aiguestortes National Park, Vall de Boí boasts a unique Romanesque ensemble which has been declared World Heritage.

In fine weather, the valley becomes a colorful mosaic where one can hike, climb heights of over 3000 meters and enjoy the trails that link the charming villages to one another.

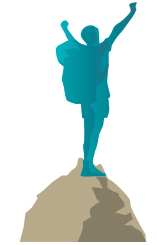
In winter, Vall de Boí dresses in white to become the perfect destination for skiing and for having an insight of how hard life must have been in this stunning high mountain setting during the Middle Ages.



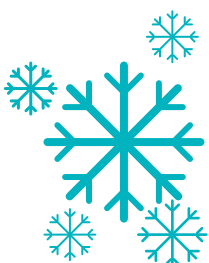
Where Romanesque reaches its finest
Declared World Heritage Site by Unesco



Where landscape gets the highest award
Declared the sole National Park in Catalonia



Where our peaks and daring hikers can reach heights of 3,000 metres



Where snow hits the clouds
Boí Taüll Resort, the highest ski slopes in the Pyrenees



Where water is a synonym for relaxation at the **circuit of Caldes de Boí Thermal Baths**



Where the purity of the landscape is turned into **delicious traditional dishes made of local produce**



Where the quality and diversity of services **have granted us the "Family Tourism Destination" official certification**



The magic of Romanesque
Projection-mapping of Sant Climent de Taüll



World Heritage Romanesque

Where Romanesque reaches its finest

The Romanesque heritage of Vall de Boí is exceptional due to the existence of such a large number of churches of the same architectural style concentrated in such a small area. Unesco World Heritage Site since 2000, these churches have been preserved over time and have arrived to our days without major alterations.



The Catalan Romanesque must-visit site: Sant Climent de Taüll

This church is the most representative icon of Catalan Romanesque. Inside of it, a video projection mapping allows, at present, to enjoy a reproduction of the original painting of Christ Pantocrator.



Discover the magic of Romanesque thanks to the new projection mapping

The paintings of the church of Sant Climent de Taüll shine back again thanks to a video projection mapping which recreates the frescoes at their original site.



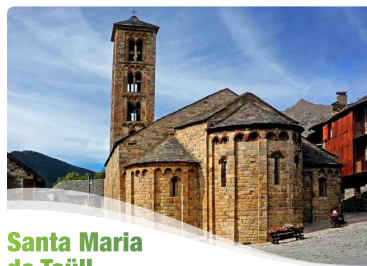
The Romanesque Centre

Interpretive Centre where visitors will find the keys to get to know and understand the ensemble of Romanesque churches of Vall de Boí.



Romanesque trails

Hiking routes linking the various Romanesque churches of the valley which allow the visitor to gradually discover, in the midst of a breathtaking scenery, these authentic gems of Catalan Romanesque.



Santa Maria de Taüll

Inside this church there is at present a reproduction of the central apse, dominated by the scene of the Epiphany, with an infant Jesus sitting on the lap of the Virgin Mary and the Magi in offering attitude.



Santa Eulàlia d'Erill la Vall

This church stands out for its slender, six storey high, square plant bell tower. Inside the church there is a copy of a carving ensemble representing the Descent from the Cross, the only whole carving by the Erill Workshop which still remains.



Sant Joan de Boi

This church is the site which best explains the role that the mural paintings played and what they looked like originally, thanks to the copies of pictorial fragments that can be found in its inside and outside.



Santa Feliu de Barruera

This church houses architectural elements from the two major periods of construction in Vall de Boí: the 11th and the 12th centuries.



Aigüestortes National Park

Where water springs up at every corner

Aigüestortes National Park is the sole national park in Catalonia and one of the best protected ones in the South of Europe. Vall de Boí is house to two of its main natural access points: The entrance by Aigüestortes which, together with the estany de Sant Maurici, gives the park its name, and the entrance by Cavallers, which gives access to summits of over 3.000 meters.



By 4WD up to the Aigüestortes Plateau

The access to the National Park is forbidden for private vehicles. There is a 4WD shuttle service from Boi to the Plateau of Aigüestortes, an ideal area to visit with the whole family.



On foot from Aigüestortes to Estany Llong

This itinerary is suitable for everyone and runs along the banks of the Sant Nicolau river up to a spectacular natural lake. The route continues all the way up to Estany de Sant Maurici through the mountain pass of Portarró d'Espert.



On foot from Cavallers to Estany Negre

This itinerary is suitable for everyone and runs along the banks of the Sant Nicolau river up to a spectacular natural lake. The route continues all the way up to Estany de Sant Maurici through the mountain pass of Portarró d'Espert.



Ascents of the three-thousanders

Vall de Boí is the starting point for numerous ascents, among which the Comaloformo (3,033m), Bessiberrí Sur (3,023m) and Punta Alta (3,014m).



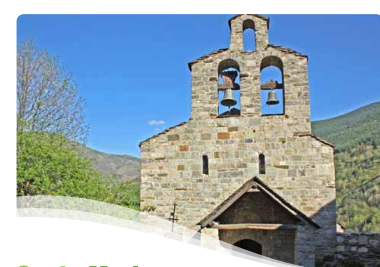
Snowshoeing

Snowshoeing allows one to walk in the deep fresh winter snow without sinking, thus opening up a safe and fun way to discover snowed nooks and routes within the National Park and the valley.



Sant Quirc de Durro

Located at the mountainside of Durro, at an altitude of 1,500m, this hermitage has become a true look out over the valley and the starting point for the celebration of the Falles.



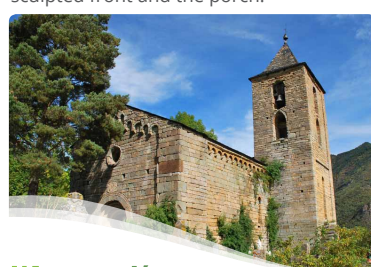
Santa Maria de Cardet

This church has one of the most spectacular apses in Vall de Boí. Inside of it there is a small crypt, the only one in the whole of the Romanesque ensemble.



La Nativitat de Durro

The monumentality of the church of La Nativitat testifies to the importance of the village of Durro during the Middle Ages. Its highlights include the large dimensions of the nave, the bell tower, the sculpted front and the porch.



L'Assumpció del Góll

The highlights of this church are the Christ (Christ Monogram) and the capitals with carvings representing struggles between men and animals, as well as the decorative elements of the portal, the latter being the most interesting part of the temple.



Outdoor activities

Passion for the wildest mountain

The diversity of landscapes in Vall de Boí offers many opportunities to enjoy nature at its best.



Walks along the traditional trails of the Valley

The perfect itineraries to unveil the charming villages of Vall de Boí on foot and plunge into the stories of their inhabitants.



Trail Running Centre

Center for the practice of trail running and mountain biking, with different routes signposted and color-coded by difficulty level.



Climbing

Vall de Boí is an extraordinary terrain to practice climbing, be it sport or traditional, with numerous routes of varying difficulty.



Fishing

Vall de Boí is an ideal area for fishing enthusiasts, with two different fishing preserves: a high mountain area featuring little rivers and lakes and another one in the lower mountain where fish are reintroduced on a weekly basis.



Canyoning

Vall de Boí is the starting point for several canyoning routes of varying difficulty.



Paragliding

A fun way to see Vall de Boí from the air and play the game of identifying streets, churches, lakes... always accompanied by an instructor on a two-seater paraglider.



Horseback riding

Horseback strolls are offered in Barruera along the river promenade for the youngest of the family.



Ice climbing

Vall de Boí is the area in the Pyrenees with the highest number and variety of ice climbing routes. More than 150 cascades for all levels get formed each year in the surroundings of the Cavallers reservoir.



Cuisine

Top products with a Romanesque flavour

Vall de Boí's cuisine is a mountain cuisine based on the natural ingredients available locally and prepared according to ancient traditions. It is a seasonal cuisine featuring the region's basic products: potatoes, vegetables, lamb, pork, beef, mushrooms, river trout...



The local cuisine helps keep our landscape alive!

One of the highlights of Vall de Boí's cuisine is the organic veal raised in the valley and cooked in the traditional way in several restaurants in the area.



Falles and traditions

A Pyrenean feast of fire

Traditions are only kept alive if they are followed, year after year, by the very people of the land, who consider their customs as their own rather than as a mere legacy of the past. The festivities and celebrations of Vall de Boí are not learnt from books; they are passed on in the squares of each village, where you can enjoy them side by side to their protagonists. The youngest ones learn from their elders, proud to feel an important part of this territory.



The Falles, The Purifying fire

The Falles are one of the most important festivities of the valley and they are linked to the agricultural and solar cycles. They take place in a different village each weekend from mid June to mid July.



A destination for families

Where you will enjoy the intimacy of your family

Vall de Boí offers a wide range of services for families with children, who will find in the valley everything they need to enjoy with their little ones. It is for this reason that the valley has received the Family Tourism quality certification.



Caldes de Boí Thermal Baths

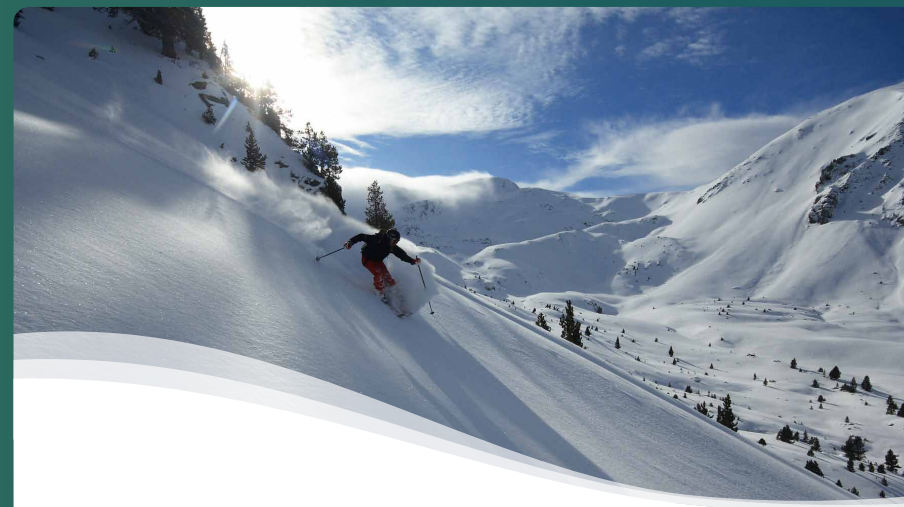
The purity of hot water springing up at 1500 metres height

The Thermal Baths of Caldes de Boí cover a large expanse of gardens scattered in which there are thirty seven sources of mineral water of various compositions and temperatures. This allows the thermal station to offer a wide range of treatments both for children and adults.



The mountain is relaxing! Discover the thermal circuit

Located in the Baths and with mountain views, the circuit is a unique thermal experience to relax body and mind.



Boí Taüll Resort

Where snow hits the clouds

Located in the Pyrenees of Lleida, Boí-Taüll Ski Resort offers everything skiers may need to fully enjoy the finest riding, with the highest skiing points in the Pyrenees and a privileged location facing north.



The privilege of skiing at the highest resort in Pyrenees

With its highest skiing point at 2,751m and its lowest at 2,020 m Boí Taüll resort grants top quality snow. There is also a low area, ideal for children.



Vall de Boí

Ps. Sant Feliu, 43.
25527 Barruera
T: 973 694 000
vallboi@vallboi.com
@valldeboi
#valldeboi

CAT: Alguaitre / Barcelona / Girona / Reus
FR: Toulouse

CAT: Barcelona / Lleida / La Pobla de Segur
FR: Toulouse

www.vallboi.cat

